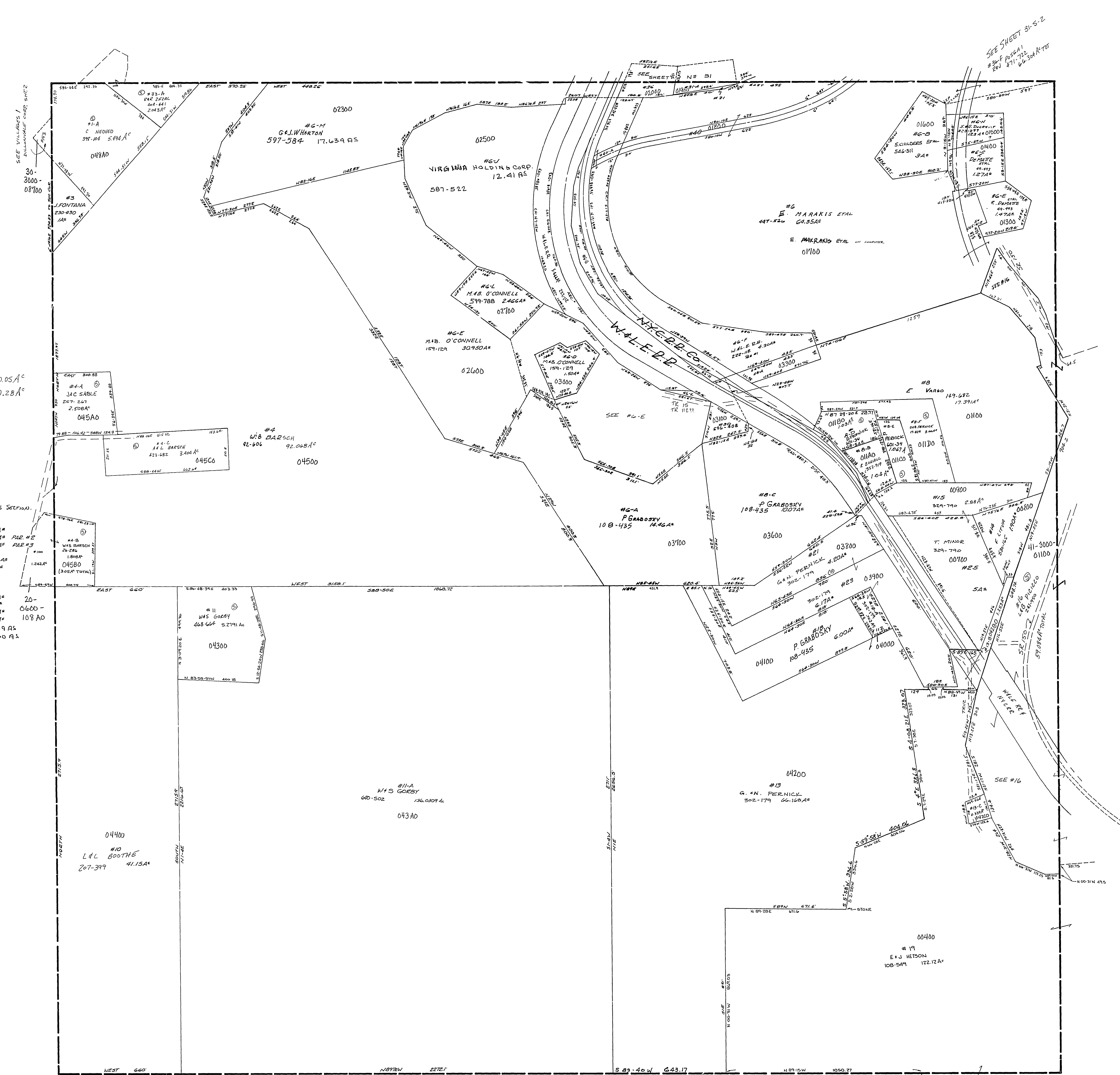
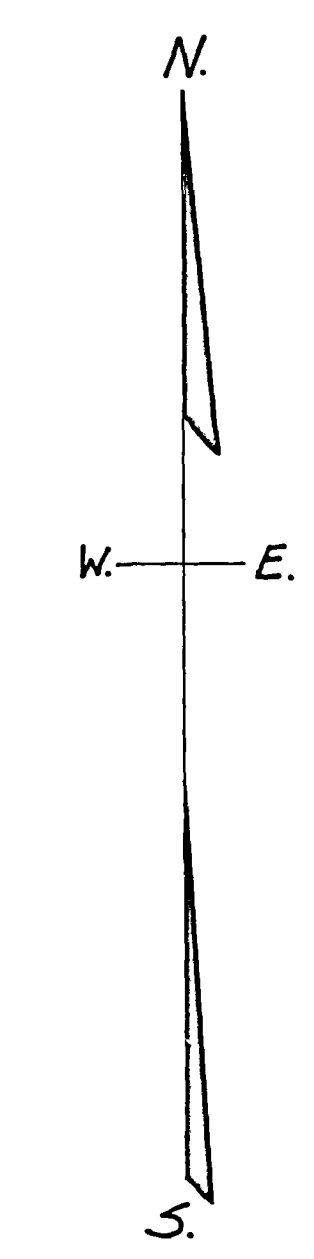


CANNOT LOCATE  
 #38 M WALKER 137-222 0.05A<sup>c</sup>  
 #39 " " " 0.28A<sup>c</sup>

② #37-F SEE SECTION 36-2 FOR TRACT IN THIS SECTION.

#6-A	D. NEEDVED	563-185	.43A <sup>c</sup>	
#6-B	W.L.E.R.R.	222-112	.771A <sup>c</sup> PAR #2	
#6-C	"	222-112	.103A <sup>c</sup> PAR #3	
#6-D	"	212-170	.01A <sup>c</sup>	
#7	ROSEFIELD ETAL	459-461	2.80A <sup>c</sup>	
#8-A	U.L.E.R.R.	222-175	.74A <sup>c</sup>	
#9-A	D. GARBOSKY	108-435	.75A <sup>c</sup>	20-
#9-B	W.L.E.R.R.	202-175	.38A <sup>c</sup>	0600-
#9-C	R.E. PIER	408-177	.125A <sup>c</sup>	108 AO
#9-D	W.L.E.R.R.	24-278	.20A <sup>c</sup>	
#13-C	C.N. PARNICK	302-179	0.339 A <sup>c</sup>	
#13-D	"	"	1.260 A <sup>c</sup>	



41-3600-

WARREN TWP.  
 SEC. 36, T.4, R.2.  
 SCALE: 1"=200'